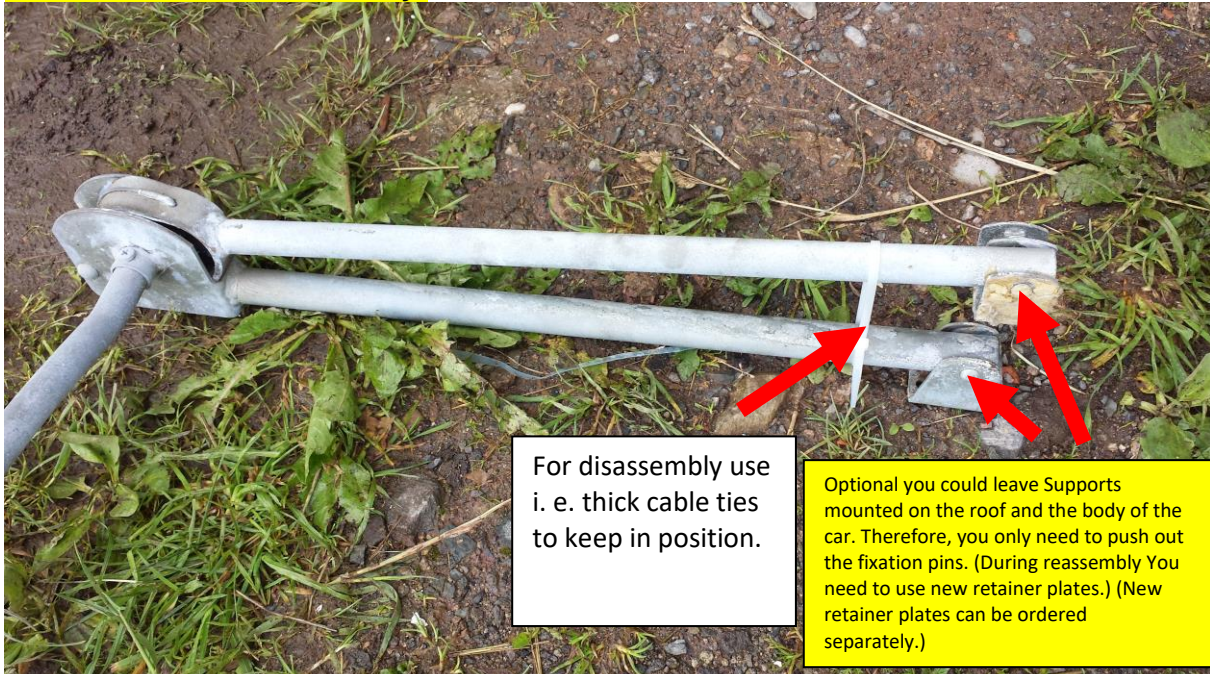




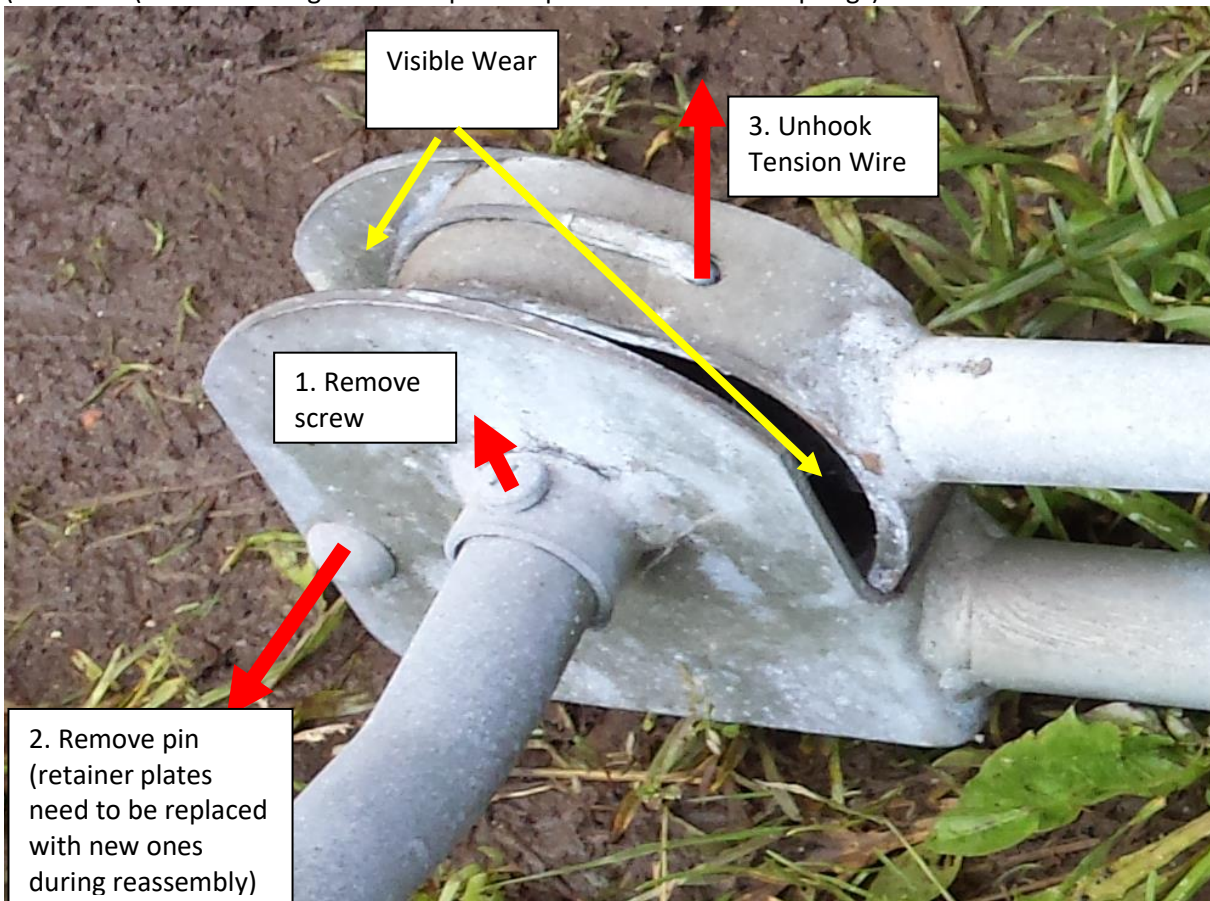
Instructions for change to WERK IV Bearing Support VW T2 and T3

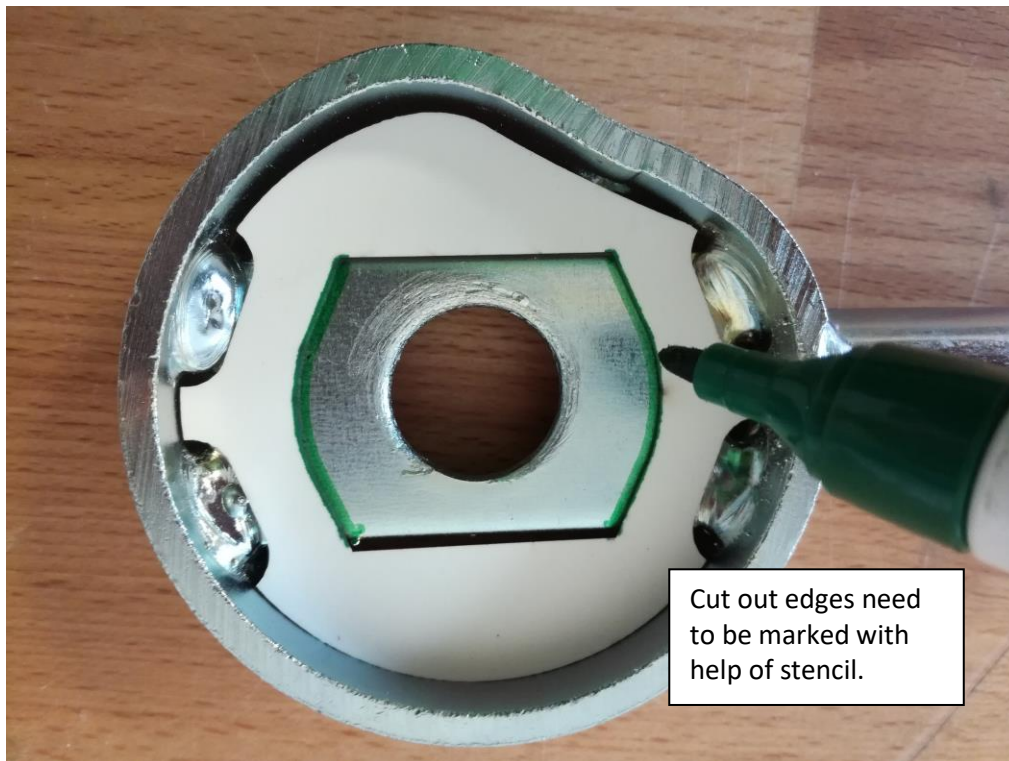
1

Read the Instruction carefully!

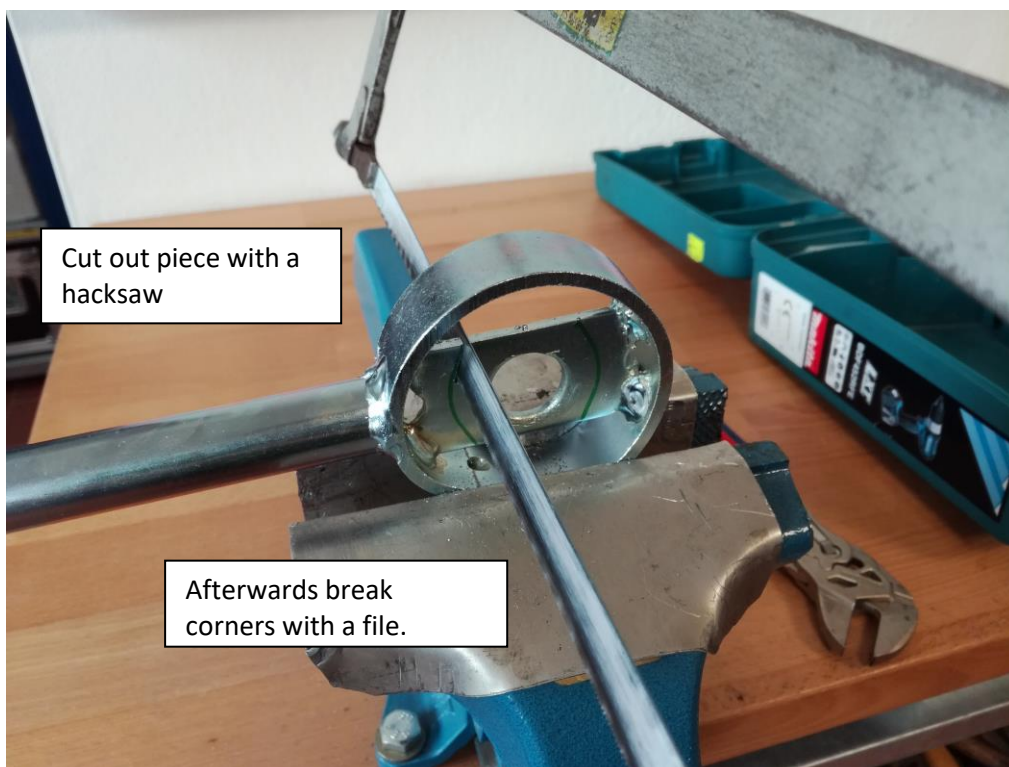


Disassembly of mechanical Components of the Lifting Roof
(cable ties (or similar things could help to keep the tension of the springs)





Cut out edges need to be marked with help of stencil.



Cut out piece with a hacksaw

Afterwards break corners with a file.



Before Press Fitting Read Notice on Page 9!

3

Notice:

Caused by a change in design in 2017 a cut out for the pulling wire was added.

This Instruction is showing the former (older) version.
This Instruction is still valid.

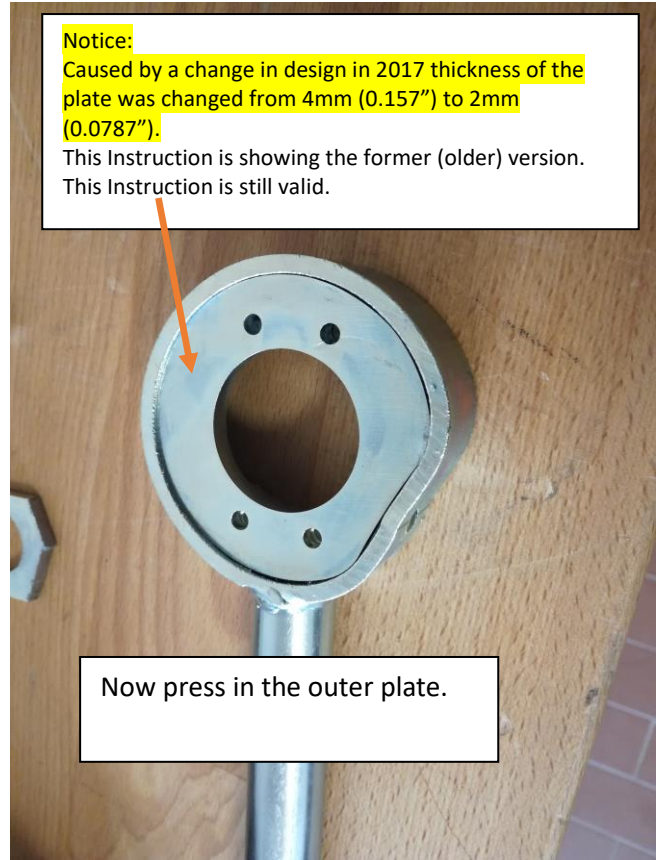


Consider: Before Press fitting remove Dirt and welding beads! Make sure it fits in perfectly.

Notice:

Caused by a change in design in 2017 thickness of the plate was changed from 4mm (0.157") to 2mm (0.0787").

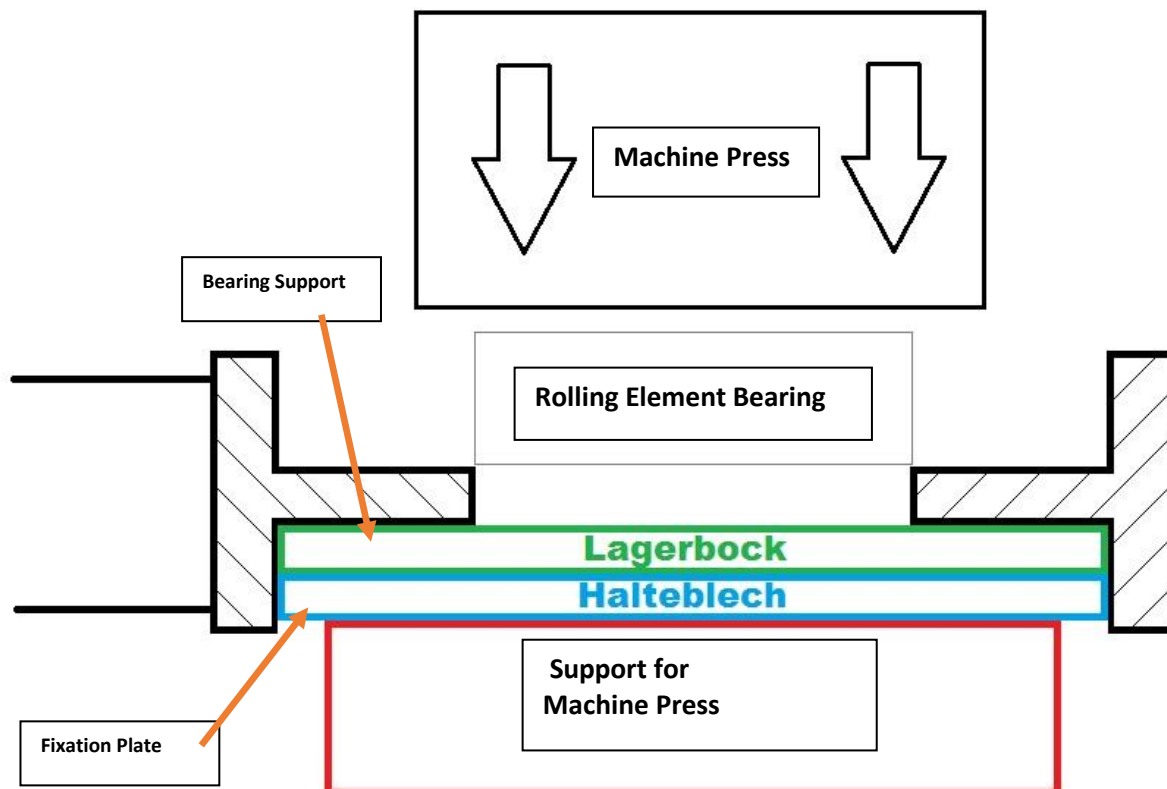
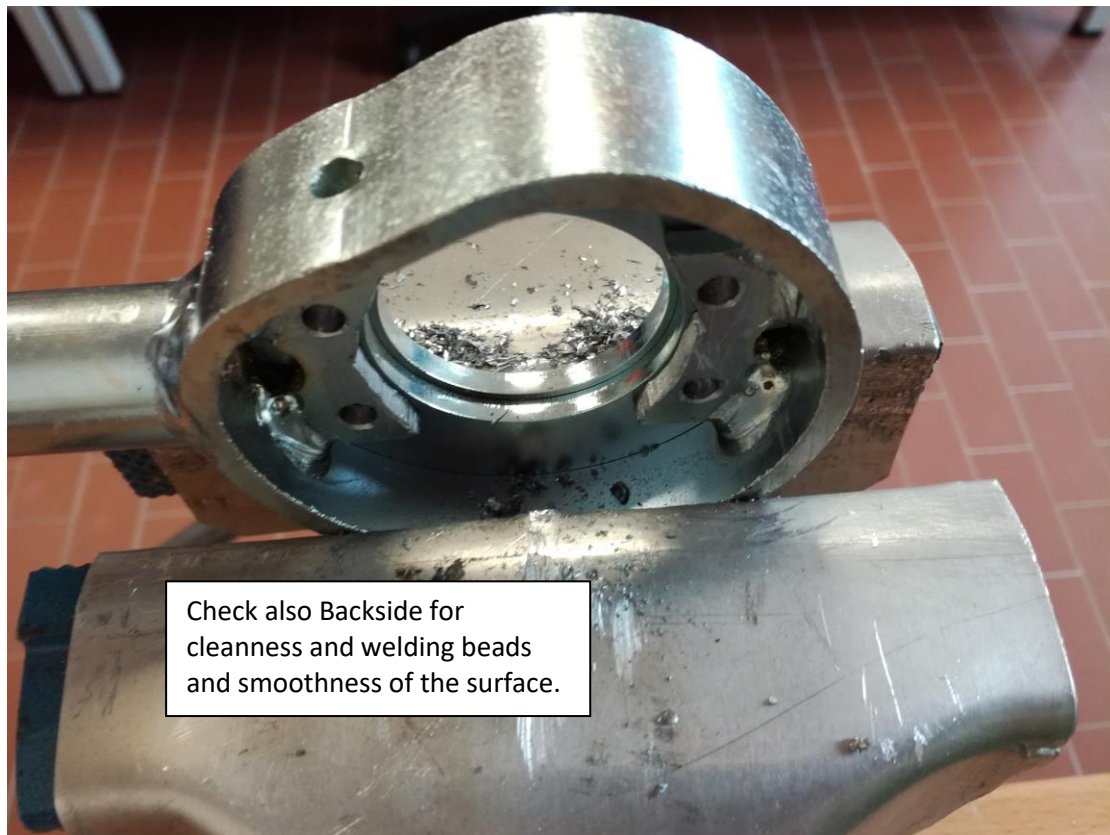
This Instruction is showing the former (older) version.
This Instruction is still valid.



Now press in the outer plate.



Renew Rivet mounting holes with a 5mm (0.1968") metal drill



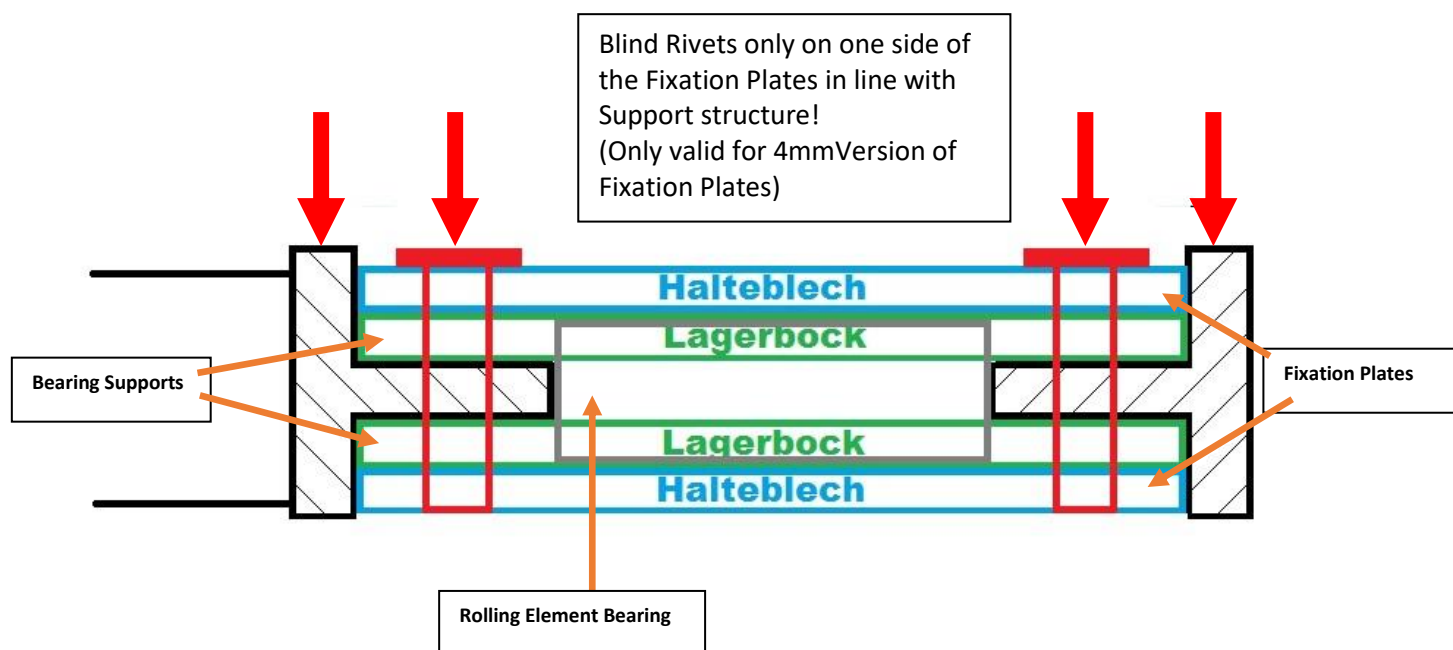


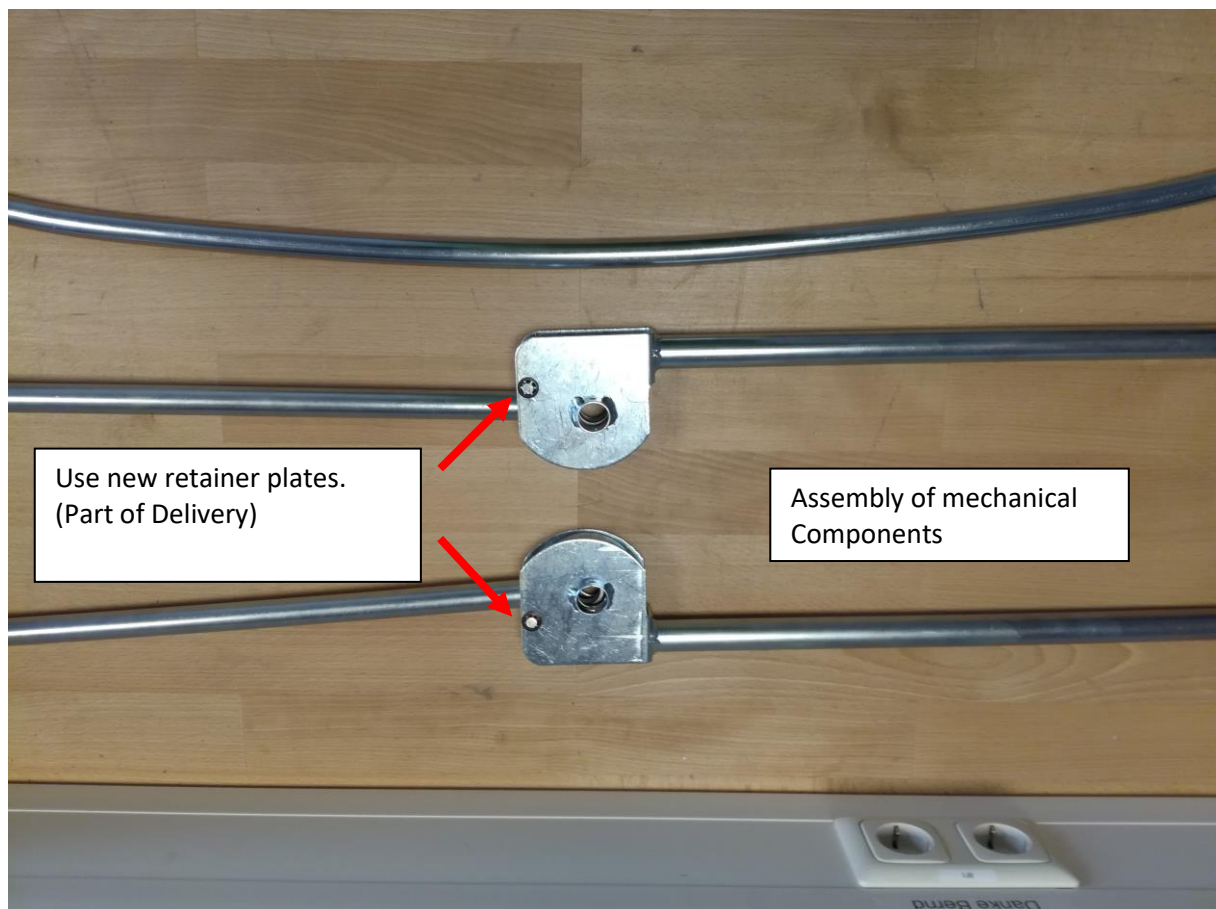
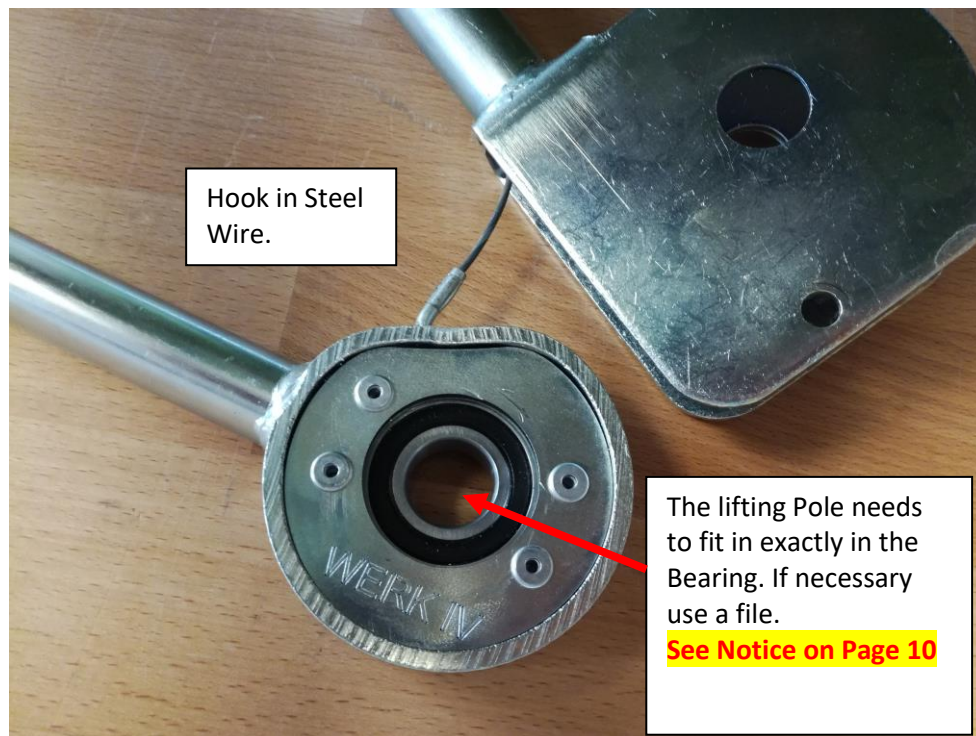


Careful Redrilling of holes.
Remove all cuttings and
splinters.
(i. e. Vacuum cleaner)



Press in
Blind Rivets

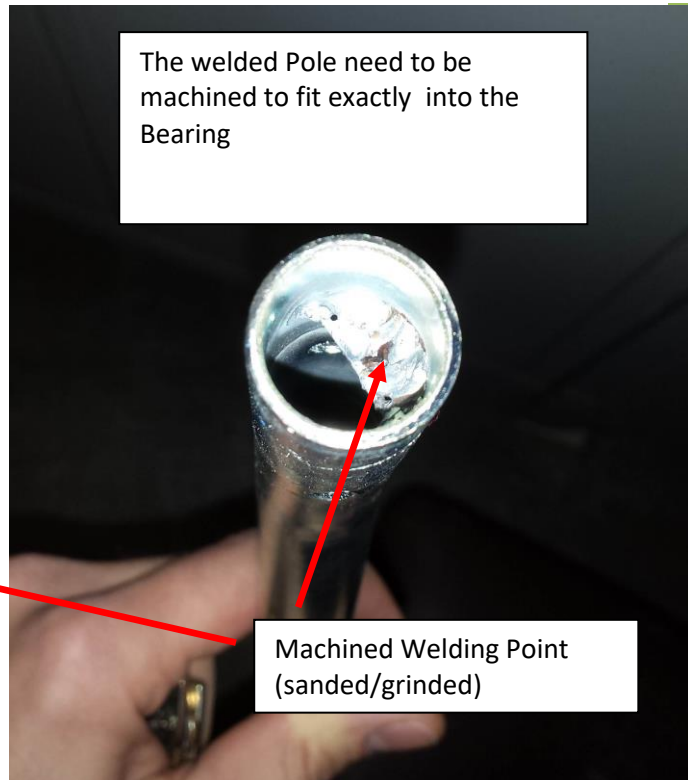
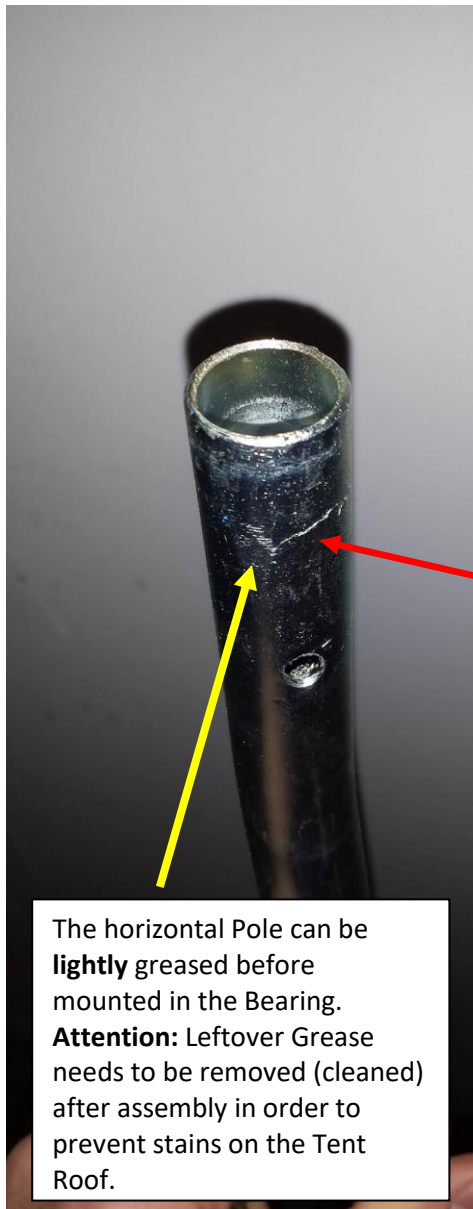






Lifting Pole: **READ NOTICE ON PAGE 10!!!**

8



Advice:

If You have disassembled the whole Assembly it might be a good idea to galvanize all the parts.

Parts can only be galvanized when disassembled.

The Lifting Pole should be sanded before Galvanizing!



This Kit is also suitable for Volkswagen T3 with Westfalia Roof attached to the Back of the Car Body.



Special Characteristics for Assembling the mechanical Parts:

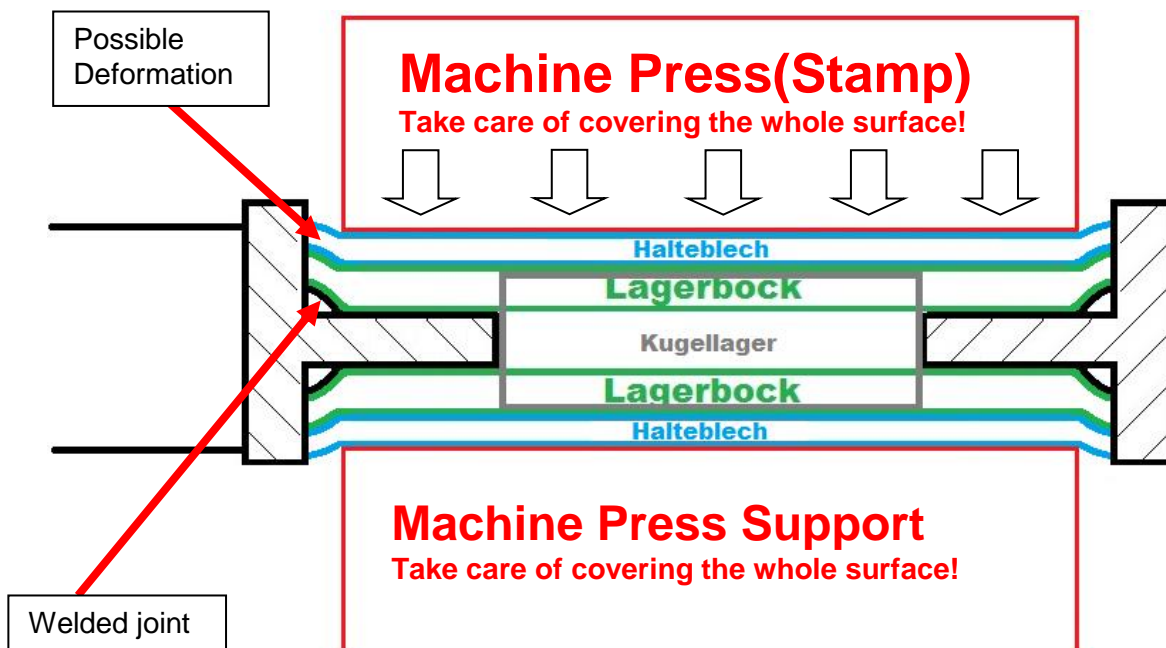
9

The factory Tolerances from the Manufacturer (Westfalia) are sometimes a bit big, this means the Welding spots from the Bearing Structure could be located underneath the Bearing Support. (see next Picture)



Special care need to be taken during machine pressing. Machine Press Stamp and Support need to have good contact to the whole surface (see next scetch).

This possible deformation of the components do not have any influence on the strength or functionality of the Lifting Roof Mechanic.





Special Characteristics for the new Werk IV Lifting Roof – Horizontal Poles:

10

The new offered Werk IV Horizontal Pole for the Volkswagen T2 and T3 are suitable for assembly with Werk IV Bearing Supports.

In some cases, the Endings of the horizontal Poles need to be optimized in order to fit in exactly in the Rolling Element Bearings.

Applying to much force during assembling could lead to Damage on the Bearing Assembly!!!

